

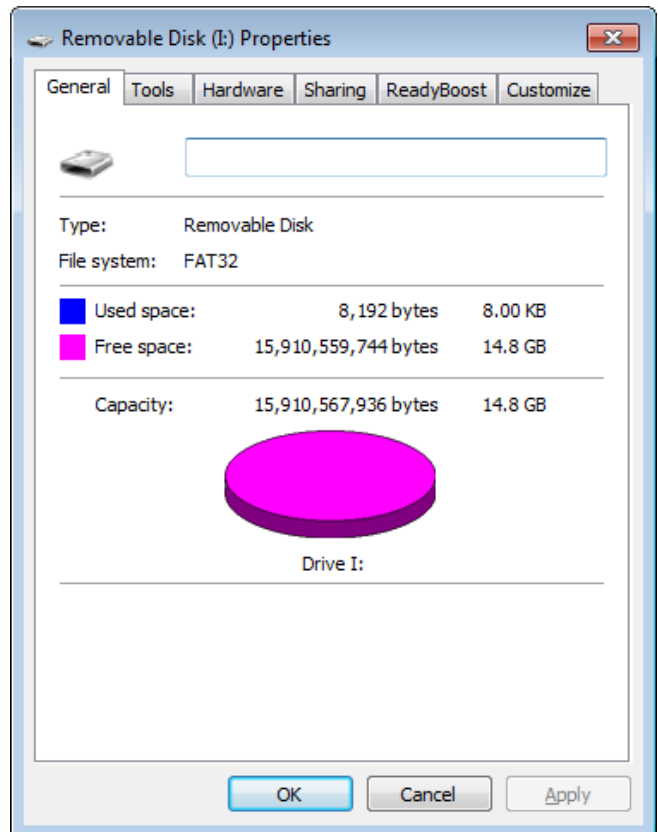
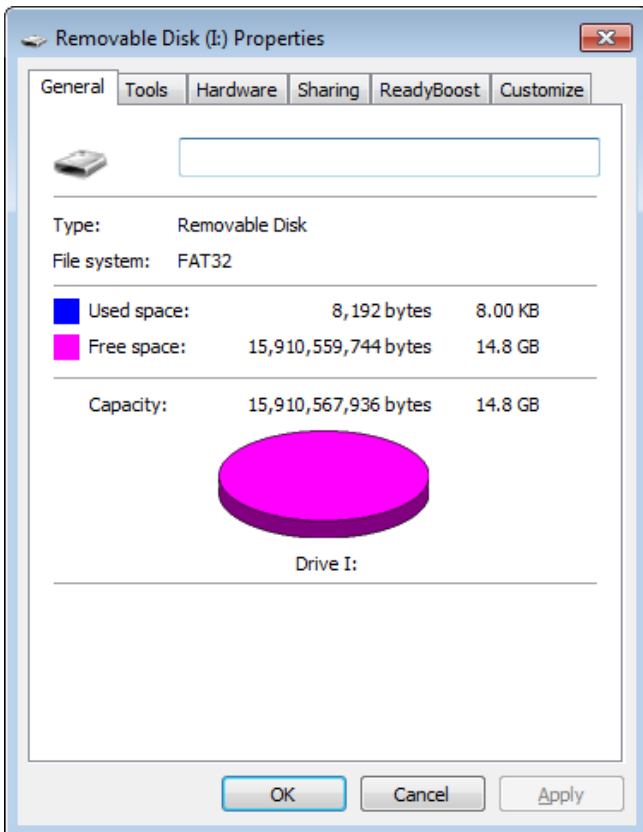
# Micro SDHC 16GB Class 6 Benchmark Test Report

Test Date.	2010/01/27	Tested By.	Nicky Li	Doc No.	
System Configuration					
Motherboard	ASUS P5K Premium / Intel P35 / Intel ICH9R / Intel Core 2 Duo E6300 1.86GHz				
OS	Windows 7 Ultimate				
Test Device.	Micro SDHC 16GB x 2 pcs	Description.	BULK		
Laser Marking	N/A	Team P/N.			
Solution.	Controller : unknown Nand Flash : unknown	F/W Version.	unknown		
Software List	ATTO Disk Benchmark V2.43 H2testw V1.4 CrystalDiskMark V2.2 HDBench V3.4				
Overall Test Result	File Read/Write/Compare/r : OK Read : 20107 KB/Sec      Write : 7360 KB/Sec (using ATTO Disk Benchmark)				

## Disk Capacity

No. 1

No. 2



## Basic Function Test

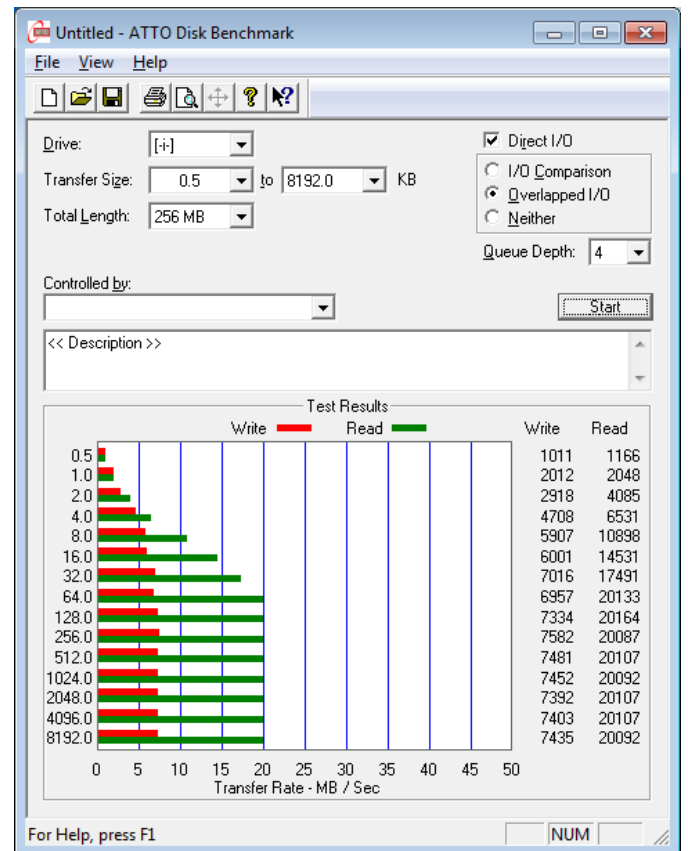
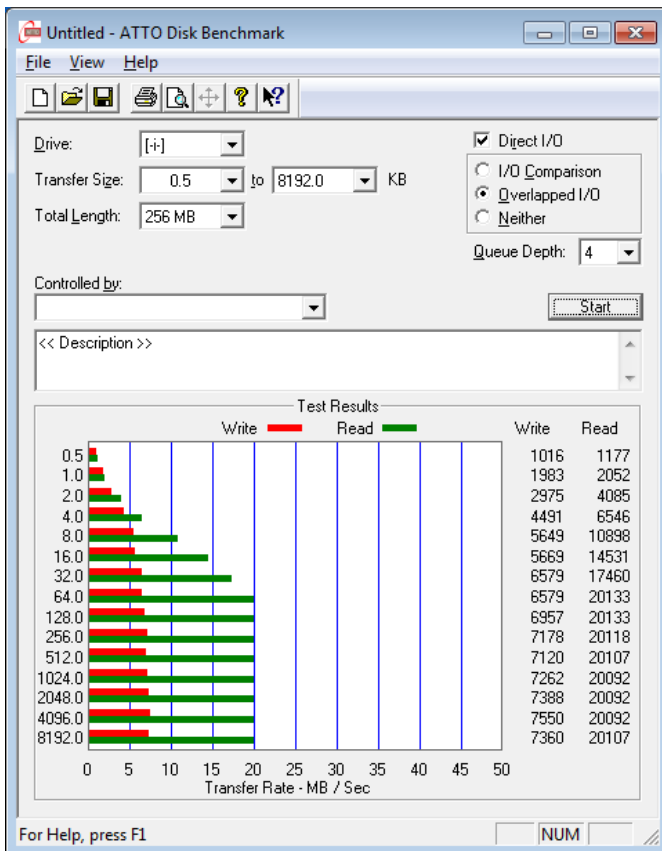
Test Items	Result	
	No. 1	No. 2
Disk Capacity	<b>PASS</b>	<b>PASS</b>
Format disk	<b>PASS</b>	<b>PASS</b>
Copy one large file to the test drive	<b>PASS</b>	<b>PASS</b>
Unplug the test drive (Safe Remove)	<b>PASS</b>	<b>PASS</b>
Compare the copied file correctly via WinDiff.exe	<b>PASS</b>	<b>PASS</b>
Delete file	<b>PASS</b>	<b>PASS</b>

## ATTO Disk Benchmark Test

ATTO Disk Benchmark Test Items	Result	
	No. 1	No. 2
Read	<b>20107 KB/Sec</b>	<b>20092 KB/Sec</b>
Write	<b>7360 KB/Sec</b>	<b>7435 KB/Sec</b>

No. 1

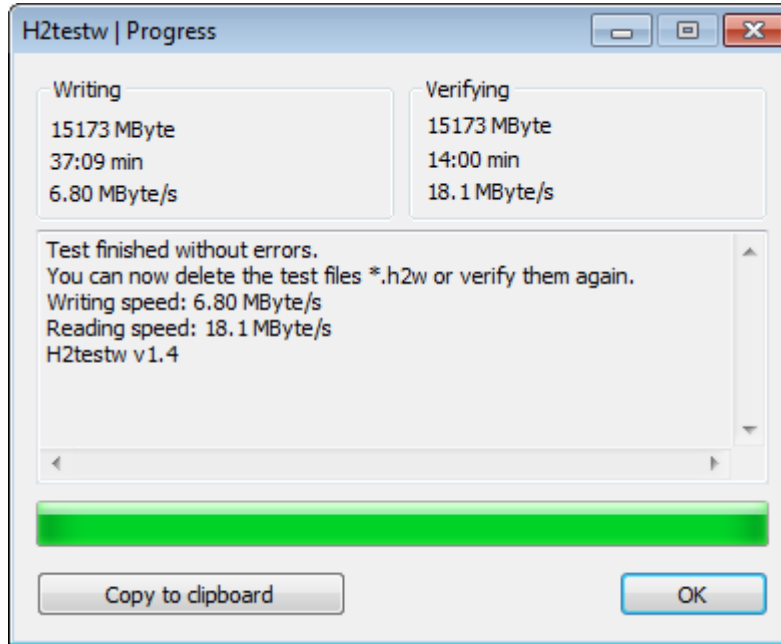
No. 2



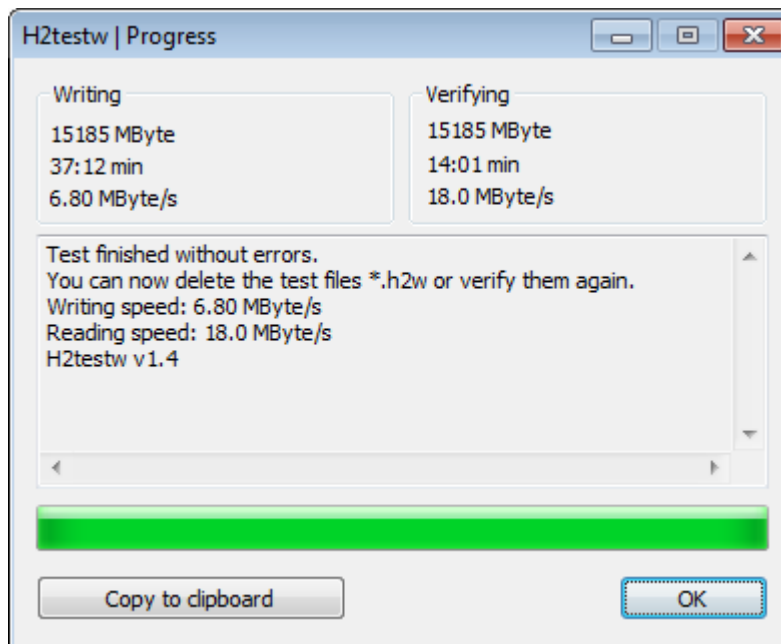
## H2testw Benchmark Test

H2testw Benchmark Test Items	Result	
	No. 1	No. 2
Read	<b>18.1 MB/Sec</b>	<b>18.0 MB/Sec</b>
Write	<b>6.80 MB/Sec</b>	<b>6.80 MB/Sec</b>
Verification	<b>PASS</b>	<b>PASS</b>

**No. 1**



**No. 2**

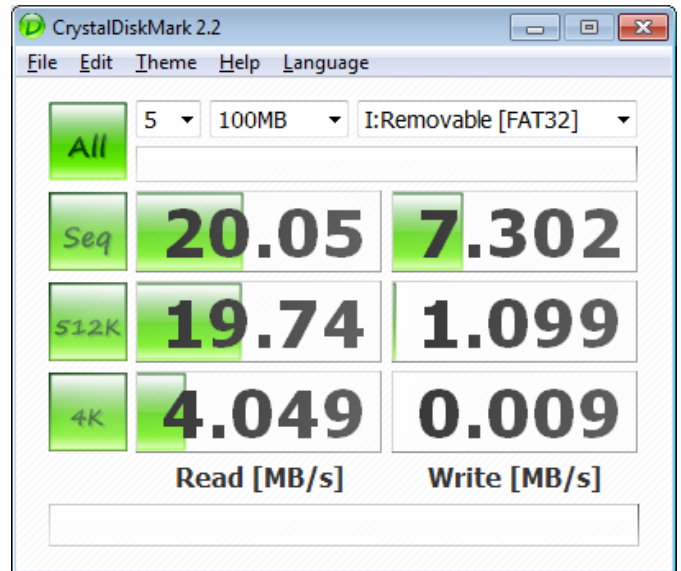
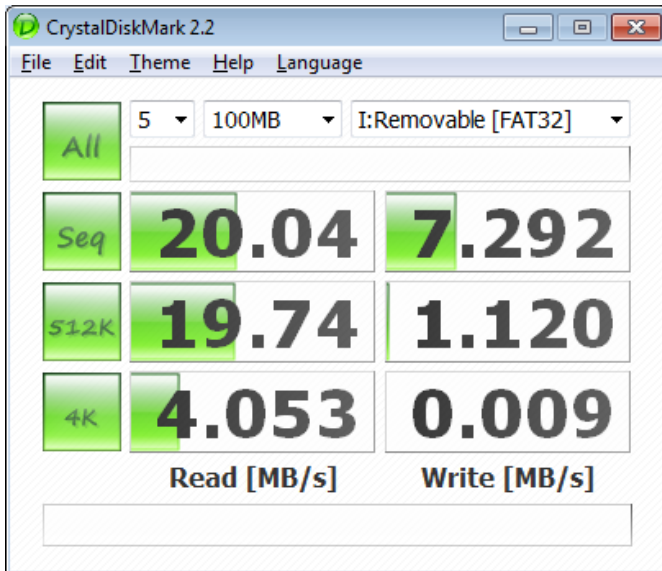


## CrystalDiskMark Benchmark Test

CrystalDiskMark Benchmark Test Items	Result	
	No. 1	No. 2
Sequential Read	<b>20.04 MB/Sec</b>	<b>20.05 MB/Sec</b>
Sequential Write	<b>7.292 MB/Sec</b>	<b>7.302 MB/Sec</b>

No. 1

No. 2



## HD Bench Benchmark Test

HDBench Benchmark Test Items	Result	
	No. 1	No. 2
Read	<b>19530 KB/Sec</b>	<b>19530 KB/Sec</b>
Write	<b>6299 KB/Sec</b>	<b>6390 KB/Sec</b>

No. 1



No. 2

